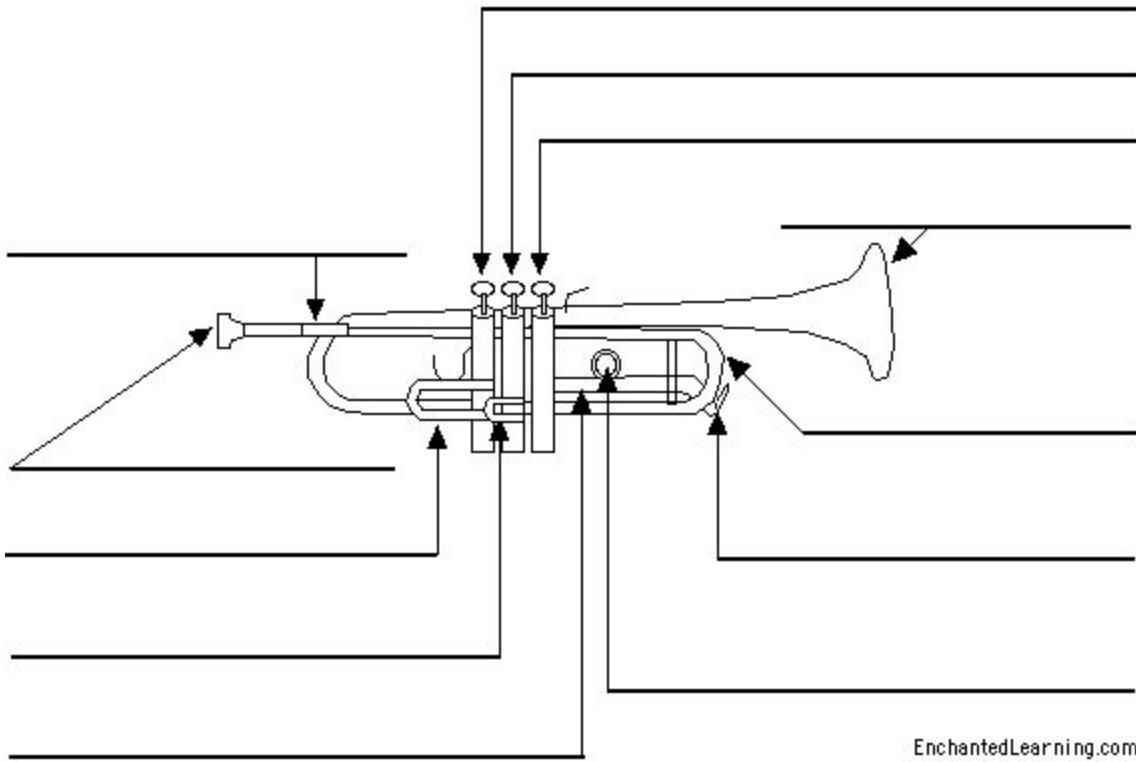


MUSAP 210 Brass Techniques - Autumn 2015 Final Exam

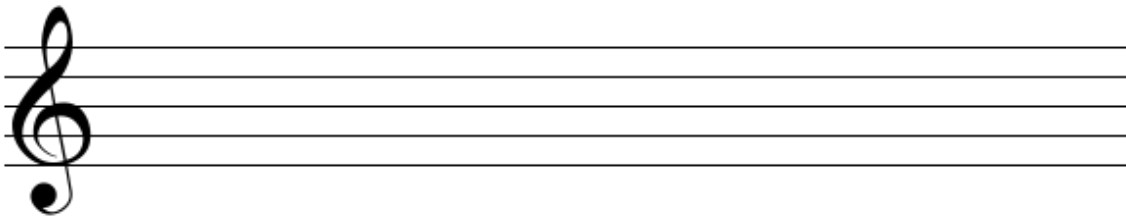
NAME: _____

DATE: _____

Label the parts of the trumpet in the blanks provided.

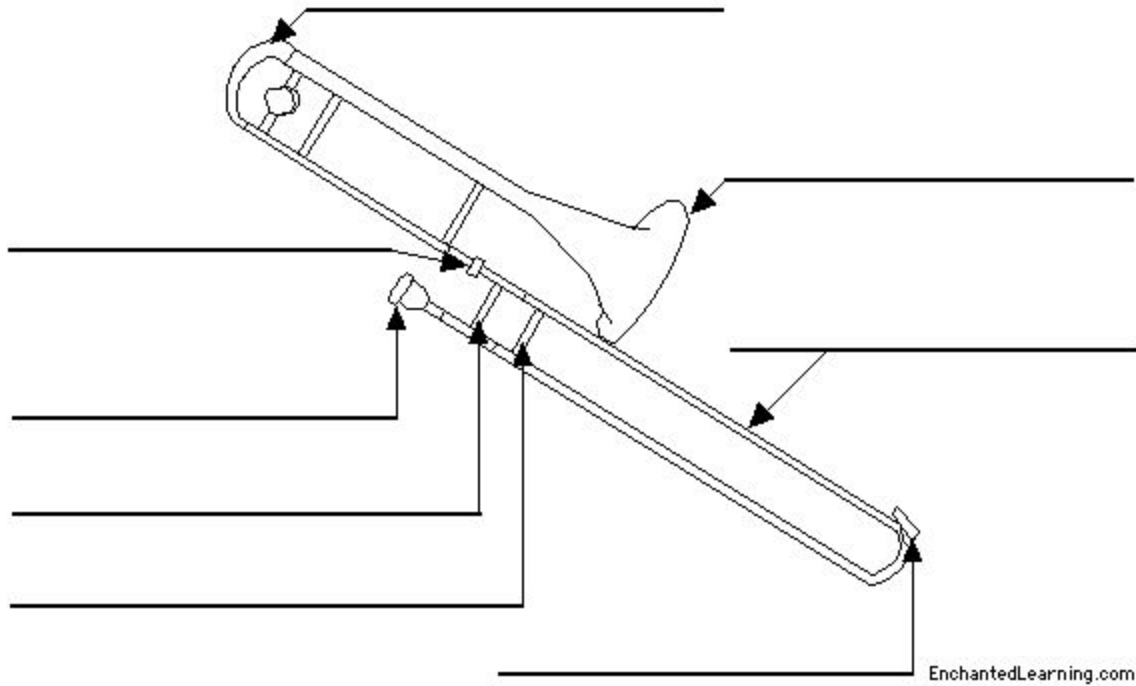


Write the Concert B-flat scale in transposed form for trumpet in quarter notes. Write the fingering below each pitch.

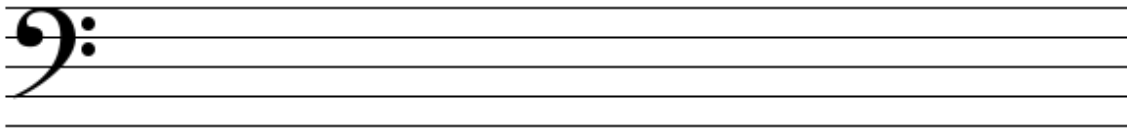


MUSAP 210 Brass Techniques - Autumn 2015 Final Exam

Label the parts of the trombone in the blanks provided.



Write the Concert B-flat scale for trombone in quarter notes. Write the slide positions below each pitch.



The three parts of articulation are...

- 1.
- 2.
- 3.

MUSAP 210 Brass Techniques - Autumn 2015 Final Exam

Describe the four steps to producing a characteristic tone on a brass instrument:

Describe the tuning process for brass instruments. What factors influence intonation?

Recommended Trumpeters (2 classical/1 Jazz):

- 1.
- 2.
- 3.

Recommended Trombonists (2 classical/1 Jazz):

- 1.
- 2.
- 3.

Recommended maintenance and cleaning equipment for beginning trumpet students:

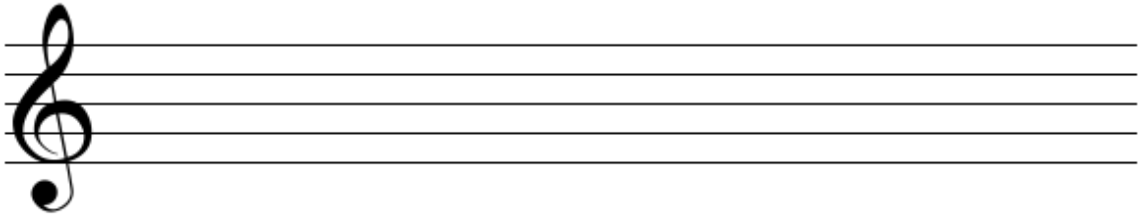
MUSAP 210 Brass Techniques - Autumn 2015 Final Exam

Recommended maintenance and cleaning equipment for beginning trombone students:

Recommended brands for all beginning brass instruments:

- 1.
- 2.
- 3.

Write the fundamental note for the open harmonic series on trumpet, then write the next 6 partials above it.



Write the fundamental note for the first position harmonic series on trombone, then write the next 6 partials above it.

