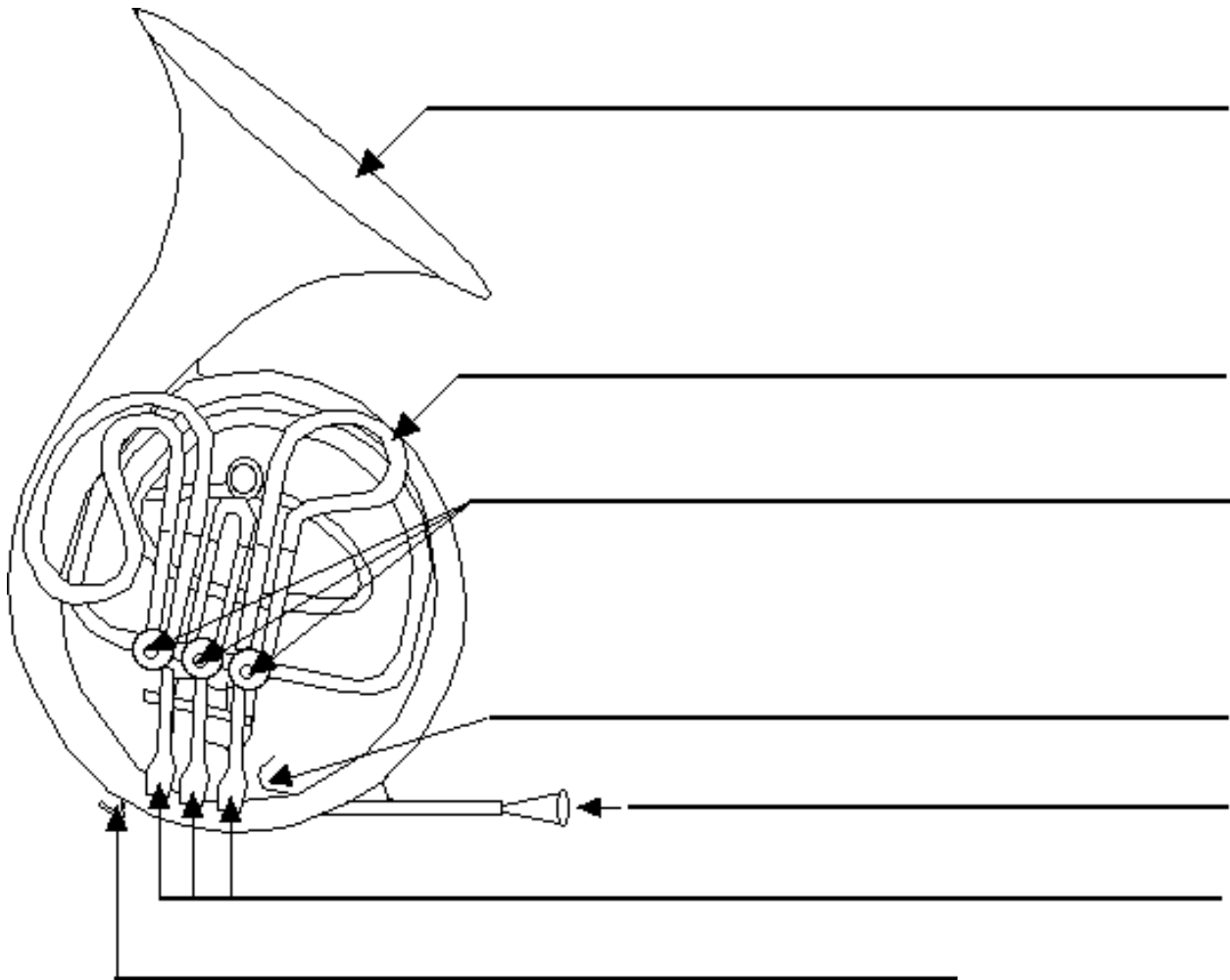


MUSAP 210 Winter Quarter- Quiz 1

Name: _____

Date: _____



1. Label the parts of the horn indicated above.
2. The horn is in the key of _____. It is written a _____ above concert pitch.
3. What is a double horn, and how does it work?

MUSAP 210 Winter Quarter- Quiz 1

4. Compare and contrast the single F horn and the single Bb horn.

5. Explain the proper posture and hand position for playing the horn.

6. The "French horn" is not actually French, it is _____. Explain where the name came from.

7. List two reputable horn brands:

a.

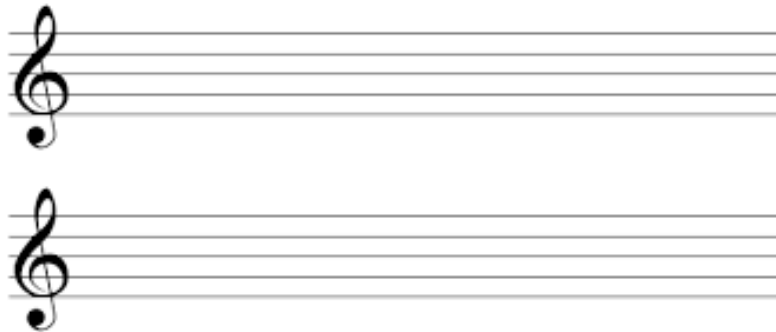
b.

8. Describe the typical procedures of care and maintenance for the horn.

MUSAP 210 Winter Quarter- Quiz 1

9. BRIEFLY explain the origin/history of horns.

10. Write the concert Bb and Concert F scale in WRITTEN (transposed) pitch. Apply the appropriate key signature.



11. Fill in the transposed notes above each concert pitch.

Written (Horn):									
Concert Pitch:	A	F	E _b	B _b	G	C	A _b	D	E

